

Mode

EMERALD Teaching and Learning is a mix of synchronous and asynchronous learning. Please read the schedule provided by ADEC carefully to see what mode is your lesson for the day. As the schedule is always arranged by Modules, unforeseen circumstances might change the flow of the Modules.

Module 1 : How to Develop a Personal Teaching Philosophy in Higher Education

Module 2 : Know Your Learners: Visualising Learning in Education

Module 3 : Outcome-based Education (OBE)

Module 4 : Technological Pedagogical Content Knowledge (TPACK)

Module 5 : Assessment

Module 6 : Learning Management System

This is the default schedule of EMERALD Teaching and Learning.

SCHEDULE

MODE



ONLINE

Atrium, Microsoft Teams, FutureLearn.



PHYSICAL

Venue informed by ADEC.

MODULE 1 MODULE 2	MONDAY	●	
MODULE 3	TUESDAY		●
MODULE 4	WEDNESDAY		●
MODULE 5	THURSDAY		●
MODULE 6	FRIDAY	●	

Platforms

These are the platforms that will be used in EMERALD Teaching and Learning.

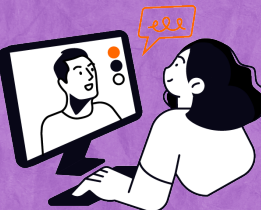


Atrium

Atrium is a similar Learning Management System like SPeCTRUM, they are both run on Moodle! This is the main platform, outlining the modules and tasks that need to be completed by participants.

HOW TO LOG IN

1. Go to atrium.um.edu.my.
2. Search EMERALD TEACHING AND LEARNING 4/2023 course.
3. Fill in Enrollment Key: ETL42023.



Microsoft Teams

This is where all participants, speakers and secretariat engage online ! ADEC will be available in Teams for your inquiry, from 9am - 5pm. Speakers will be available during their designated modules. You may also use the Teams to meet your group members!

JOINING TEAMS

1. All registered participants will be automatically added in the Teams ETL42023.
2. If you find yourself not in the Teams, email us before 27 November 2023.



FutureLearnCampus

You are required to complete Module 1 and Module 2 as short courses in FutureLearn, using the exclusive access of FutureLearn Campus.

HOW TO ENROL

I DON'T HAVE A FUTURELEARN ACCOUNT

1. Go to www.futurelearn.com.
 2. Click SIGN IN.
 3. Choose REGISTER.
 4. Complete details.
 5. Connect account.
- Your FutureLearn account is ready.

I HAVE A FUTURELEARN ACCOUNT

1. Go to Universiti Malaysia's FutureLearn Campus page. www.futurelearn.com/campus/universiti-malaya.
2. Click START LEARNING NOW.
3. Enter your UMMail address.
4. Enter verification code.
5. Start browsing and search for these courses
6. Enroll in both courses and start your learning journey.
7. MARK COMPLETE each step to show your progress.
8. Upon completion, get your Certificate of Achievement.

MODULE 1

How to Develop a Personal Teaching Philosophy in Higher Education

MODULE 2

Know Your Learners: Visualising Learning in Education